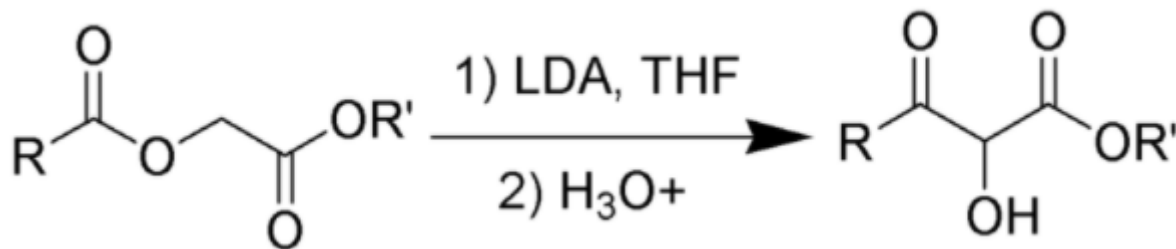


陈德恒重排 Chan rearrangement





陈德恒 (Tak Hang Chan, Bill Chan), 祖籍广东
1958年自香港来加求学, 1962年获多伦多 (Toronto)
大学化学学士学位

1965年获美国普林斯顿 (Princeton) 大学硕士、
博士学位 (Richard Keith Hill)

1965-66年在美国哈佛 (Harvard) 大学做博士后研究
(Robert B. Woodward)

1966年8月受聘麦吉尔 (McGill) 大学任助理教
授
1978年升为正教授

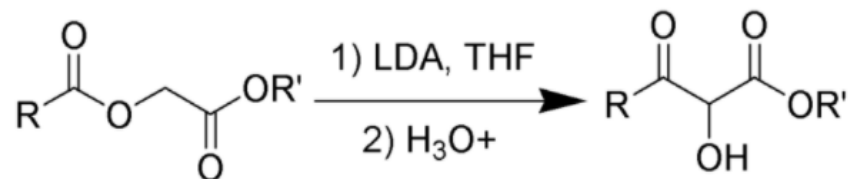
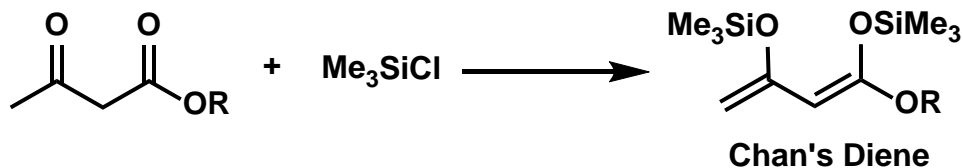
1985至1991年担任化学系主任

1991至1994年担任理学院院长

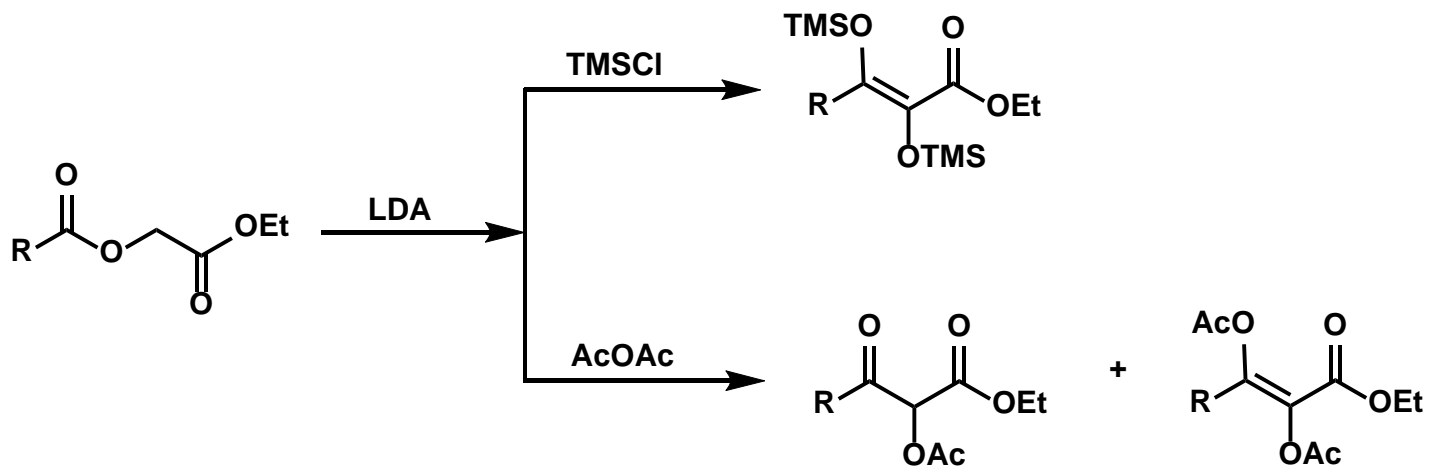
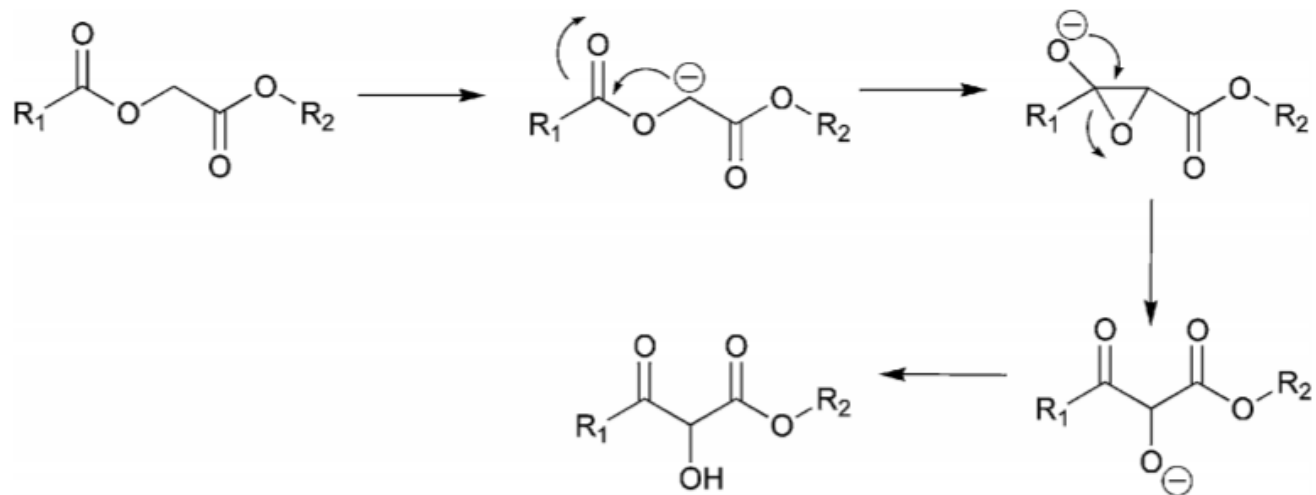
1994至1999年担任教务副校长

2000年任汤姆林森 (Tomlinson) 讲座教授

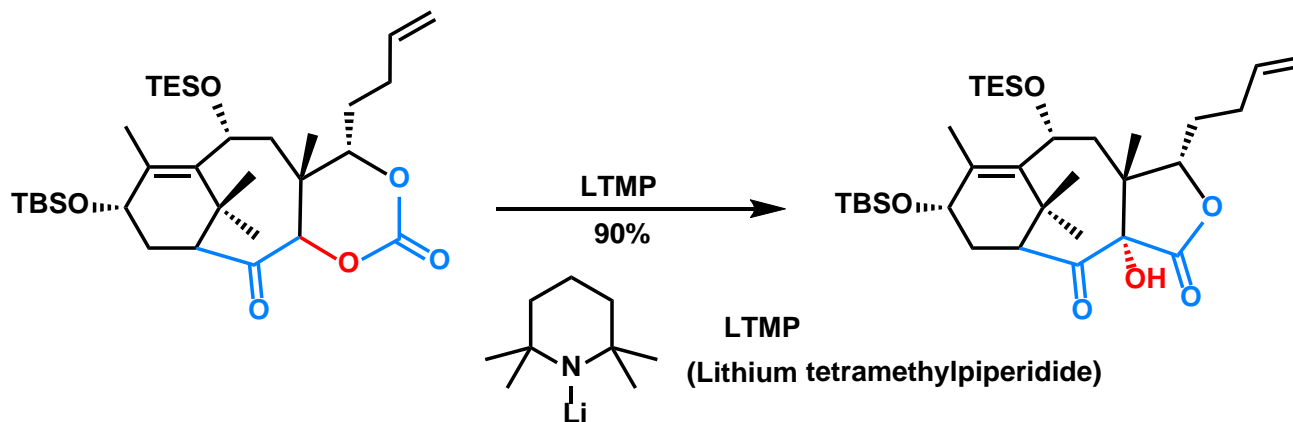
2004年以名誉教授身份退休



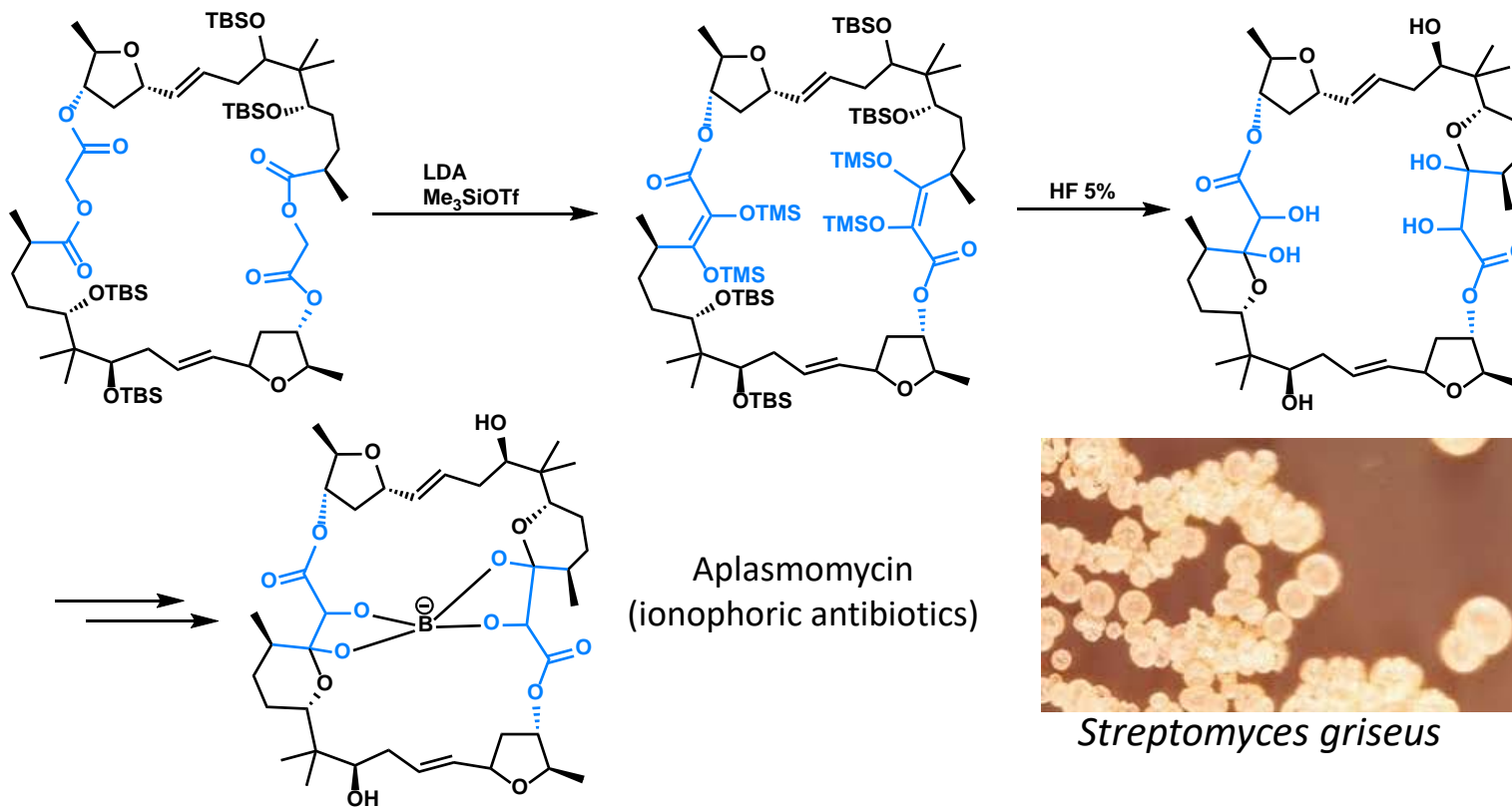
Chan rearrangement



Robert A. Holton, 1994, Florida State University

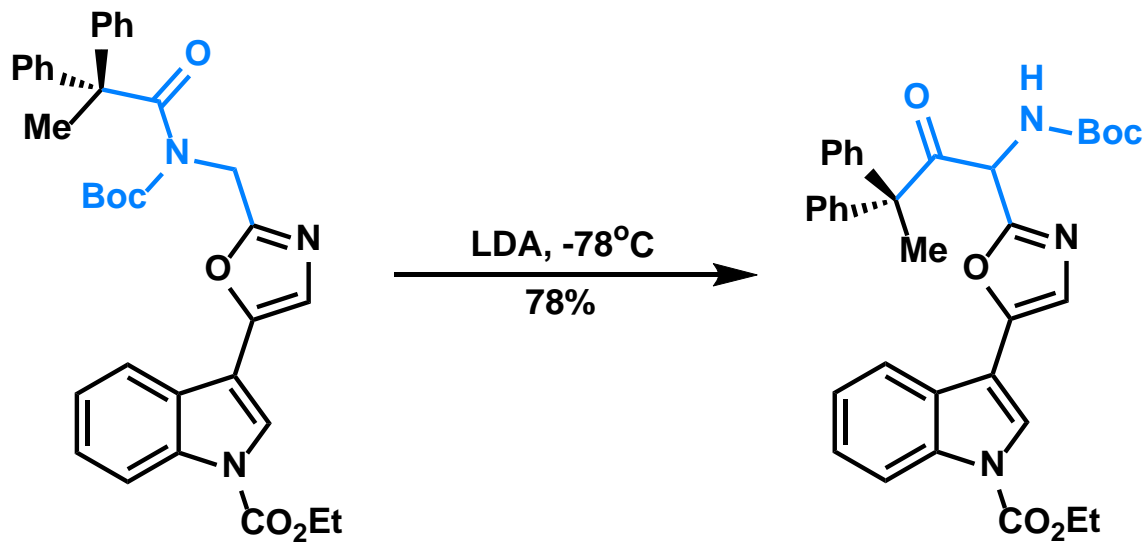
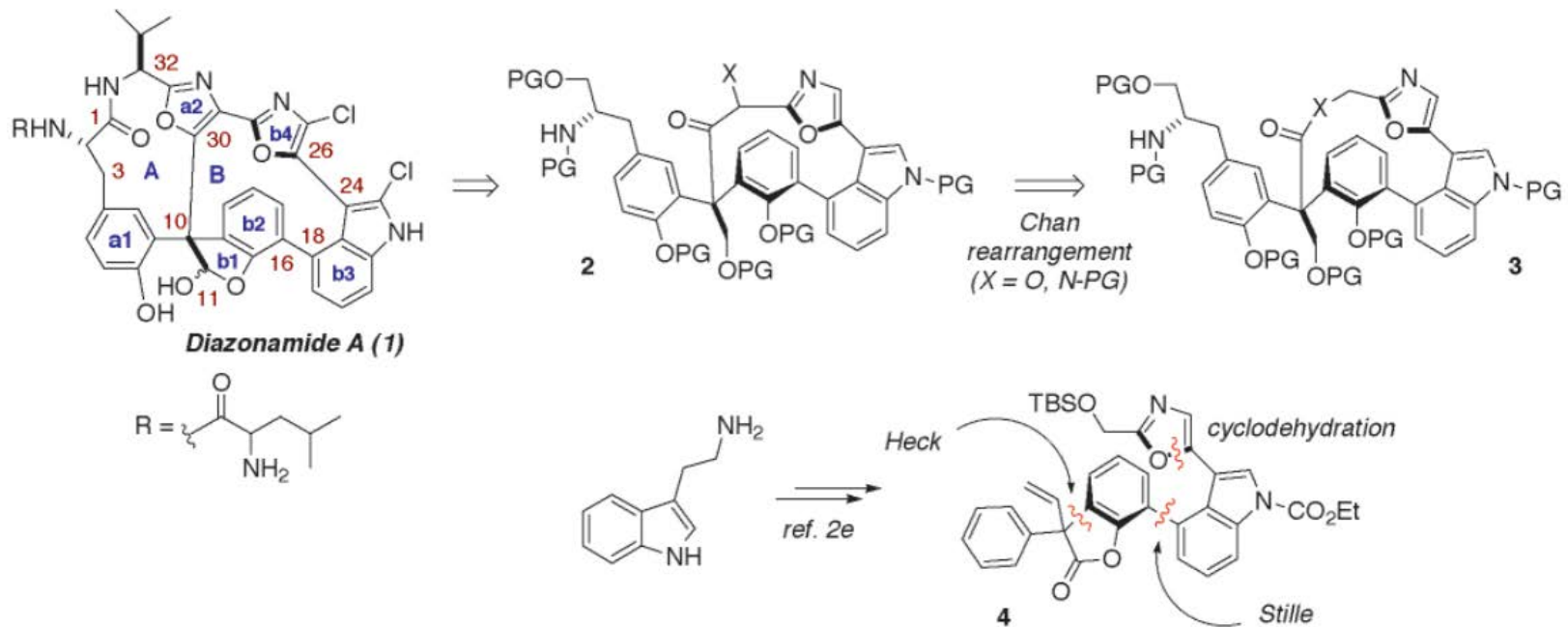


James D. White, 1986, Oregon State University

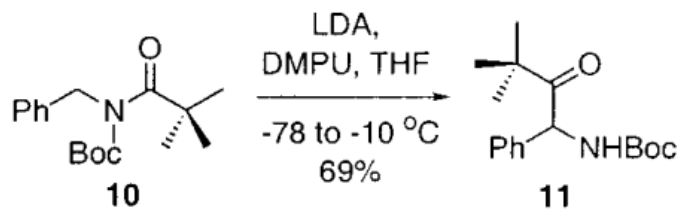
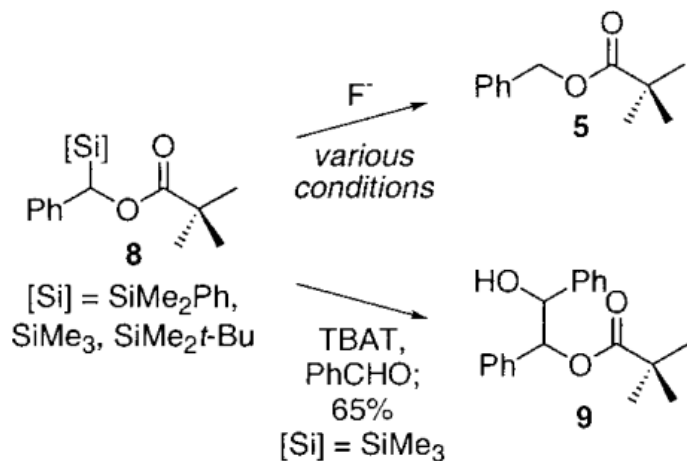
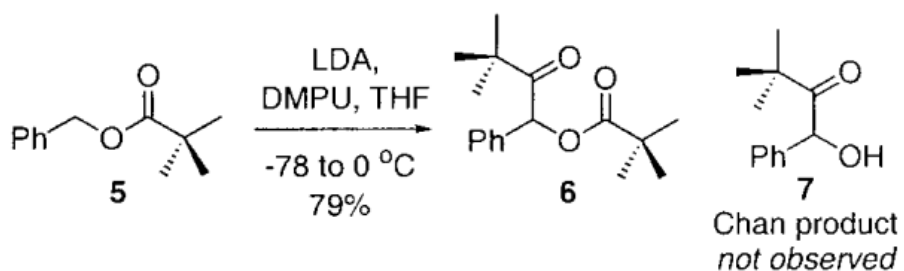


Streptomyces griseus

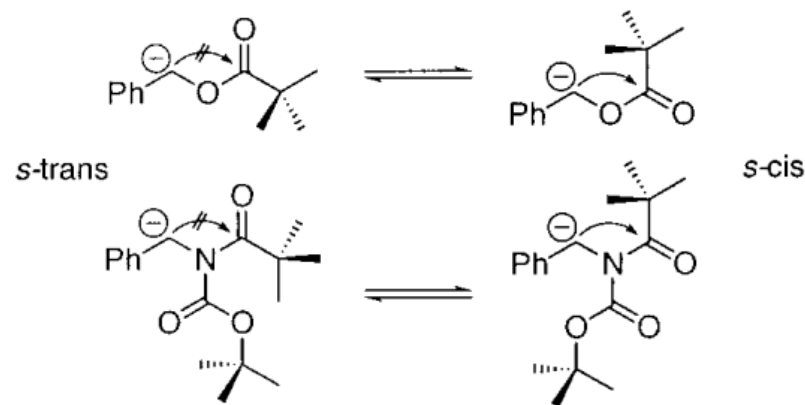
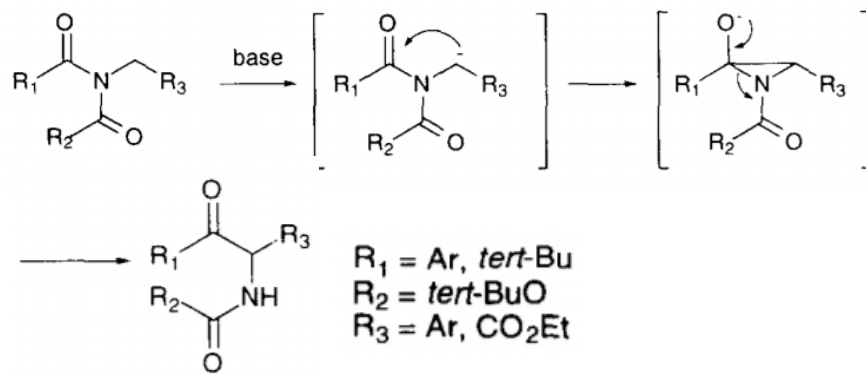
Peter Wipf, 2001



Peter Wipf, 2001, University of Pittsburgh

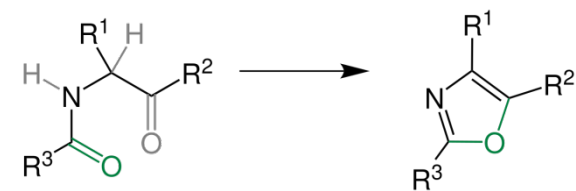
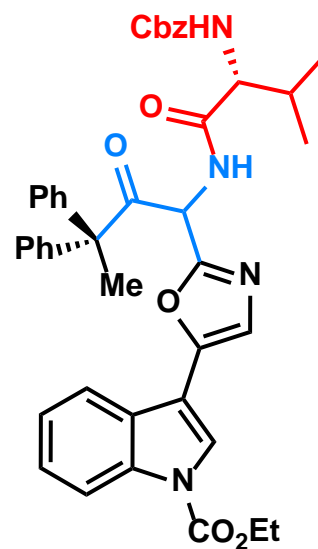
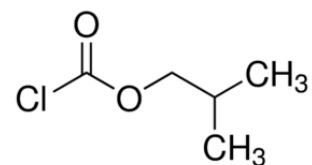
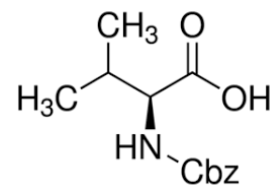
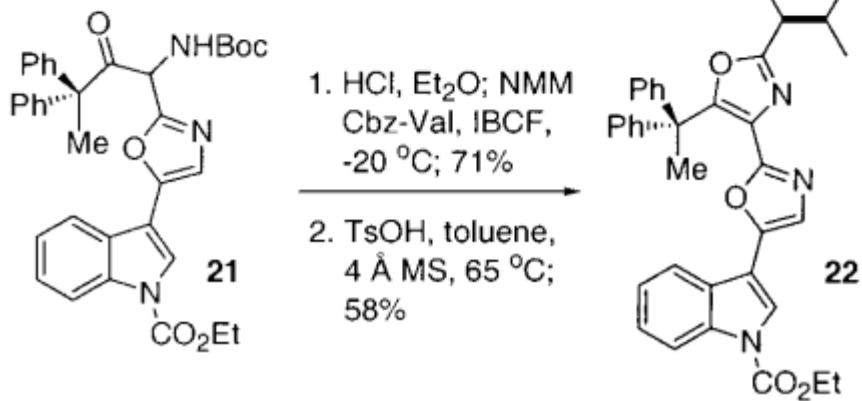
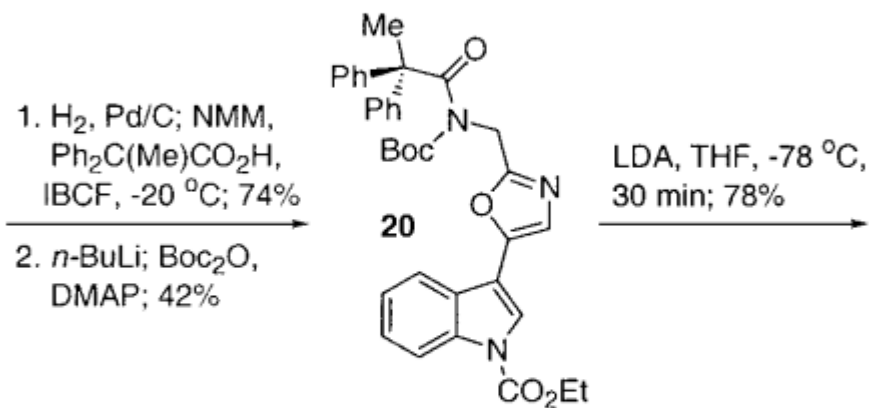
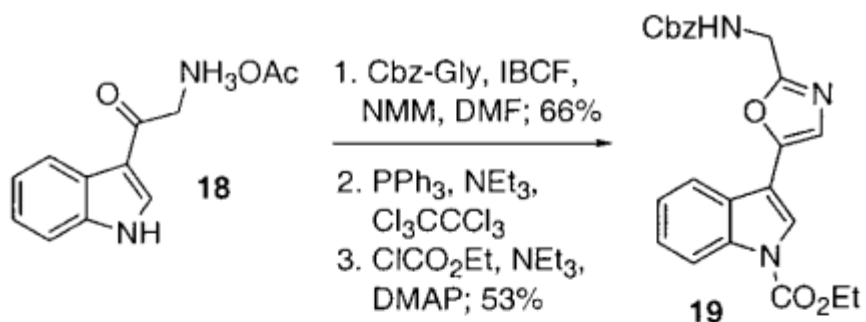


Hamada, 1998, Chiba University



Calculations (6-31G*) suggest little ground-state energy preference for the *s*-trans conformation over the *s*-cis (1.4 kcal/mol) for the imide. In the case of the ester, this preference is considerable (>16 kcal/mol).

Peter Wipf, 2001



Robinson-Gabriel reaction

Thanks